



**BRISA**   
Contemporary handmade furniture



# About us.

Located in the city of Cambé, north of Paraná.  
Founded in 1998, it started its activity with 14  
artisans, to produce apuí and reed furniture. Now a  
days, the company has 4000 meters of built area in  
Cambé and has more than 100 collaborators. We  
are the only representative of the Nardi brand in  
Brazil. 100% Italian products with functional design  
for outdoor environments.



# Handmade excellence.

“

Brisa trademark is synonymous of excellence in contemporary handcrafted furniture. The craftsman's sensitivity and talent are revealed in every detail. All furniture is tailor-made, carefully along with the craft work.

With raw materials that respect nature, Brisa products express personality and good taste.







“

Through the 20 years of history, the company has been working to attend the needs of customers who it every time more prepare theirs homes to welcome people in search a receptive place thats promotes well-being.

● — Our history

# Well being

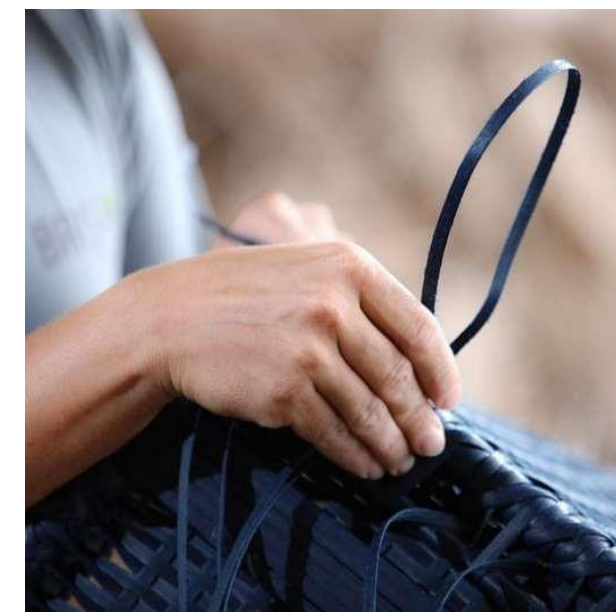




# Carefull with details.

“

We have the carefull with every detail,  
since the begining of producing until the final  
delivery, so that felling of receiving a Brisa  
Casa products is the best as possible.



# We prioritize quality.

“

The brand acts with its own identity, prioritizing quality in its products. The fiber and ropes used are tested in laboratories, aluminum with the best alloys suitable for furniture, french fabrics of the best quality, fabrics and foam of renowned brands and conscientious use of wood.



Our history







## Criativity & harmony.

“

The brand carries in their DNA creativty forms and harmony when working with materials and textures. Creating a complete line of products to attend all the spaces being intern or extern, corporate ou residencial.







“

In addition to the line products, we are able to produce under demand and customizing furniture, creating a universe of possibilities.

● — Our history

# Customization.

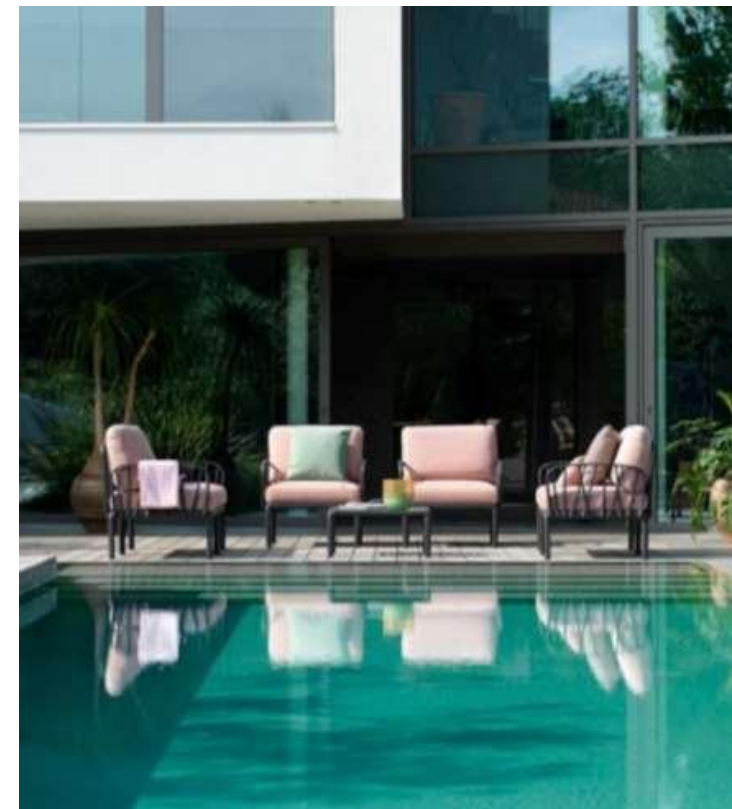






Our  
diferences.

- 2 and 5 years of garante
- Handmade production
- Nacional and imported raw material
- Own production
- Studio Brisa – design and own development
- Partnership with architects / products designer
- Capillarity of your delivery
- Residencial, Corporate & Hotelier





Main customers and partners in Brazil.





# Own Designers.

Claudia Mazzieri

Daniela Ferro

Pepe Lima

Dennys Tormen

Cadu Silva

Eduardo Baroni

Luia Mantelli

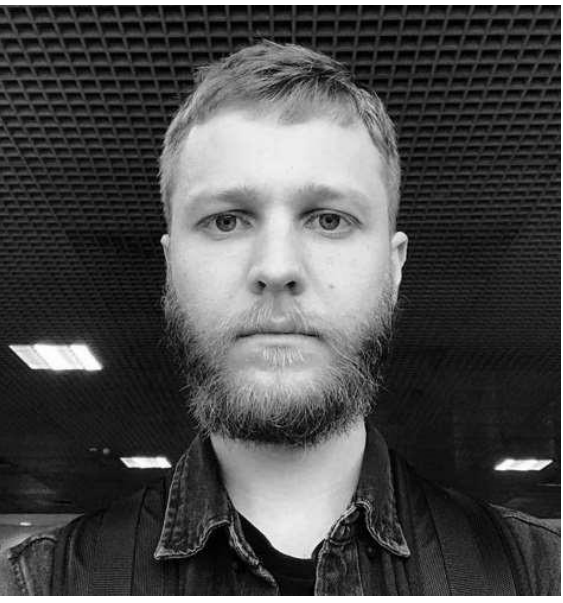
Flavia Pagotti

Tri Design

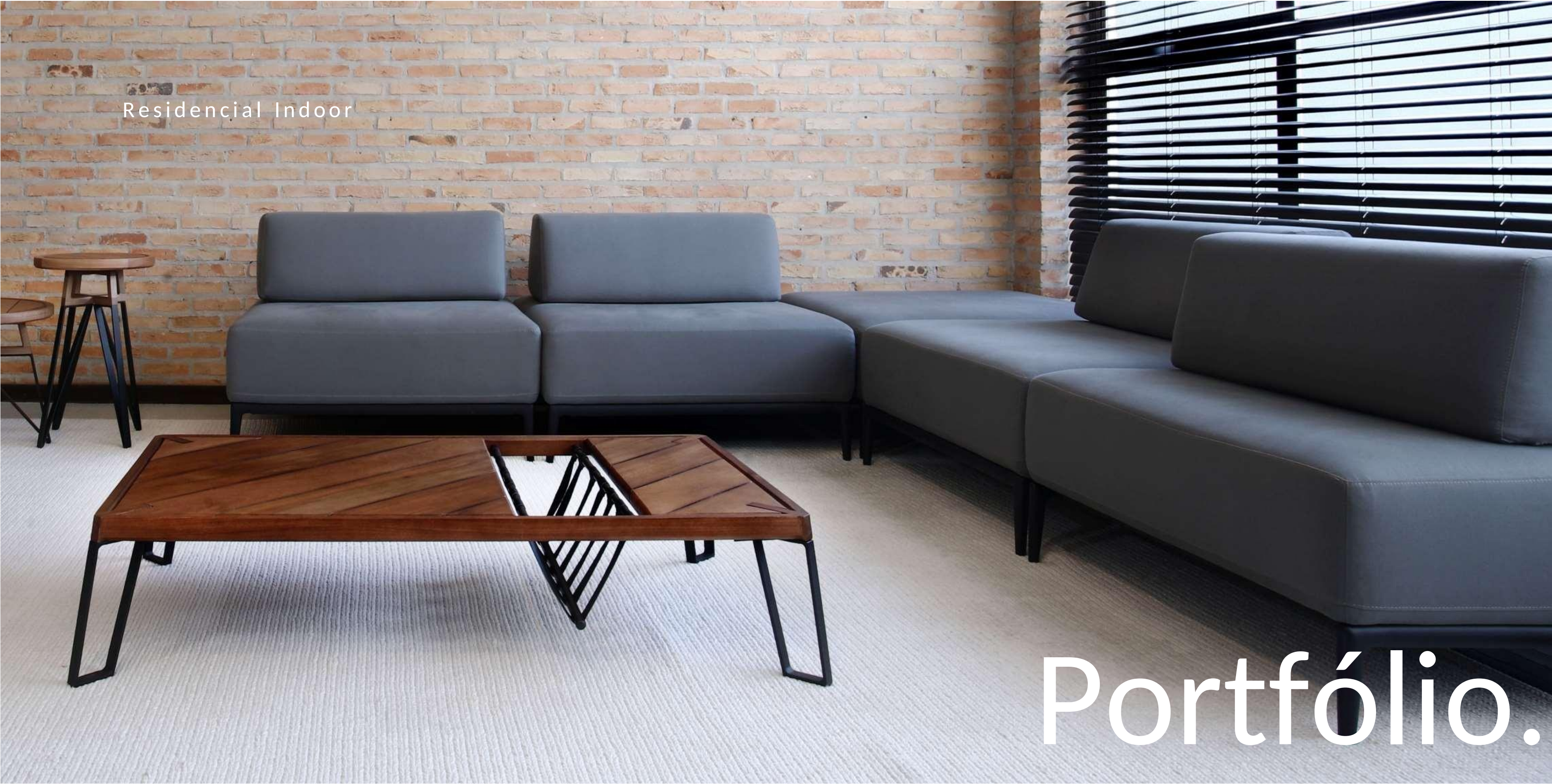
Estúdio Ninho

Fernanda Polucha

& Mariana Zuana







Residencial Indoor

Portfólio.





# Design

The expressiveness of hard wood, combined with the comfort of fabrics.

Ananda Couch in hard wood and upholstered.

Viva Armchair in hard wood and upholstered with nautical rope details.

Danesa Coffee Table in hard wood with aluminum powder coated.



# Yumi

The Yumi armchair has a casual design.

Frame in hard wood, shell upholstered in fabric or leather.







# Cavaletta

Cavaletta Stool

The appreciaton of handmade  
work and the raw material,  
becoming a unique product.



# Moara

The Moara couch proposes innovative ideas of style and functionality.

The biggest highlight of this piece is the wooden base, worked with refinement of fine joinery, and integrated with side support trays.





# Informal

## Raw Couch

Informal lifestyle concept, with wooden frame and shell upholstered in fabric or leather.

## Tama Armchair

Set of curves that besides produce a unique frame and fluid in wood, plays with spatial plans and visual perception. Frame in hard wood, seat upholstered in leather or fabric.





Residencial Outdoor

Portfólio.





# Benjamin.

The Benjamin Couch, piece in aluminum covered in synthetic fiber or nautical rope.

Brings confort and cozy to external places.



# Naomi.

Unpretentious and welcoming the Naomi chair, values the essential in its design. The curved line and tapered feet give personality to this products line. Options in aluminum or cumaru hard wood legs.







## Enora.

Enora armchair brings the lightness of tubular aluminum, matched with a clean esthetic and quality materials, bringing comfort and durability.



# Fransk.

Fransk bench, a functional and practical piece; where backrest, feet and arms make a unique frame of cumaru hard wood to generate a fluid and simplified composition.







## Sami.

Sami Couch, with cumaru hard wood frame, shell in synthetic fiber or nautical rope. Its stripped shape brings a relaxed sitting.





# Round.

The Round tables line has as main objective the visual lightness and the constructive harmony. All the protagonism stay on account the bottom basket, woven in nautical rope, that is the truth “deposit” of treasures.





# Trill.

## Trill Chair

Monobloc chair. Uniformly colored fiberglass polypropylene resins with UV additives. Matt finish. With non-slip feet. Recyclable resin. Stackable.



Corporativo Indoor

Portfólio.



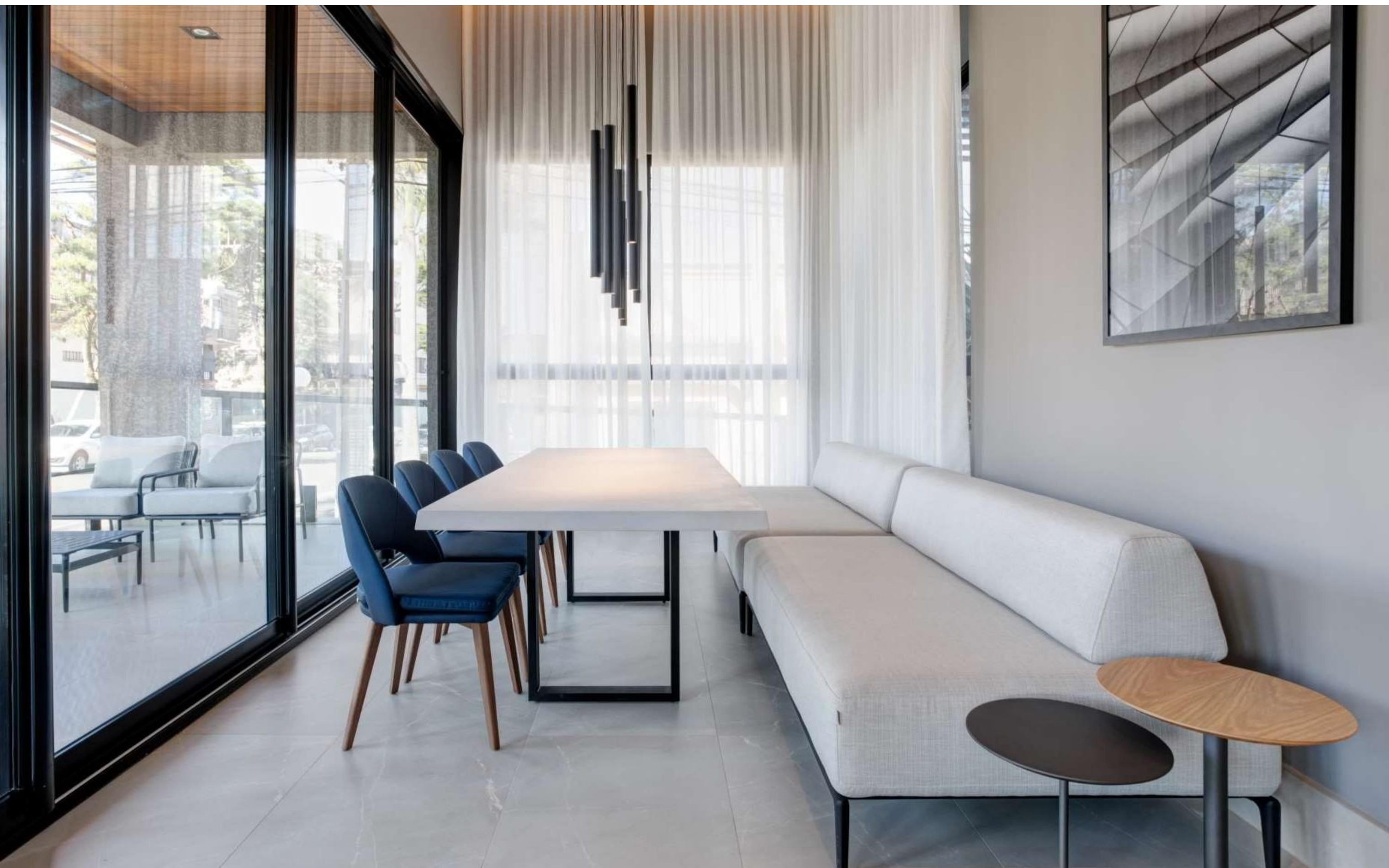
# Zoé.

The Zoe Shelf is a versatile furniture that integrates and divides the spaces.

Frame in steel powder coated and hard wood.







# Motiro.

Interactivity and relaxation is the proposal of the Motiro couch that has several modulations. Its base can be in wood or aluminum powder coated. Its seat and back are upholstered in fabric or leather.

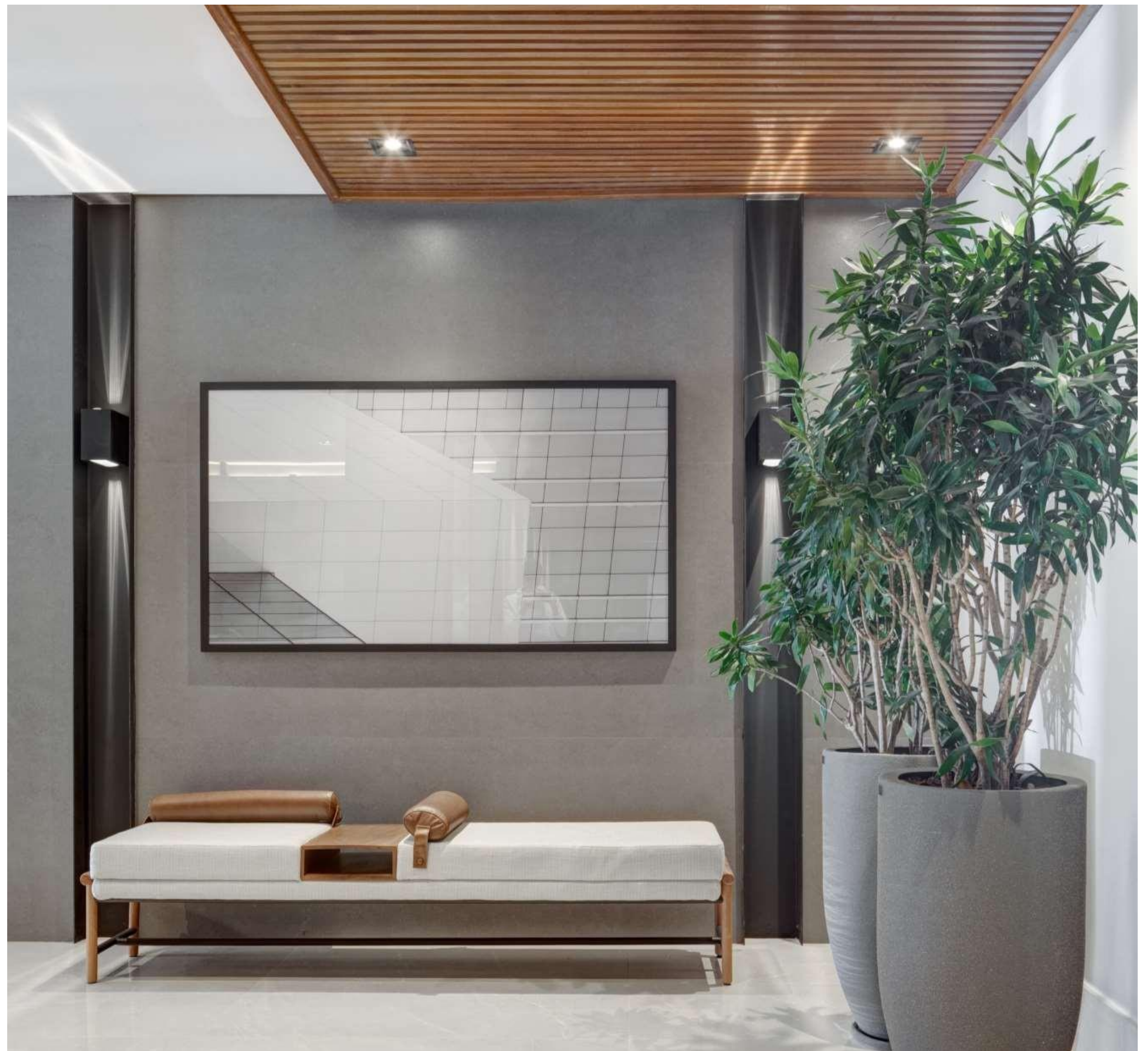
With timeless design the Nina chair has a foot structure with a delicate, light and clean profiles. Its curved shell and rounded backrest allow ideal comfort for the dining room and gourmet space.



# Etto.

Its asymmetrical design gives movement to the piece, its upholstered seat and lumbar back cushion gives to Etto bench greater cozy.

The feet fixed on the outside and the support table positioned between the seats highlight the composition.





# Bora.

Bora chair monobloc chair  
uniformly colored  
fiberglass polypropylene  
resins with UV additives.  
Matt finish. With non-slip  
feet. Recyclable resin.  
Stackable.







## Tama.

Set of curves that besides produce a unique frame and fluid in wood, plays with spatial plans and visual perception. Frame in hard wood, seat upholstered in leather or fabric.



# Danesa.

The Danesa side table, is simple and charismatic, is a wildcard piece, ready to complement different spaces, play with colors and be an important ally in relax moments.





# Motiro.

Interactivity and relaxation is the proposal of the Motiro couch that has several modulations. Its base can be in wood or aluminum powder coated. Its seat and back are upholstered in fabric or leather.







## Nascente.

Nascente bistro table, piece for space for relaxation and daily renovation, which brings together comfort, practicality and functionality.



# Zen.

Zen swing, in aluminum powder coated.





Corporativo Outdoor



Portfólio.





# Zeus.

Zeus line products, made of aluminum or hard wood, allow a wide variety of combinations, providing versatility to its use.



# Cadeiras.

Monobloc chair. Uniformly colored fiberglass polypropylene resins with UV additives. Matt finish. With non-slip feet. Recyclable resin. Stackable.

Bora , Net e Bora Bistrot.







## Héstia.

Hard wood top, with joinery fine details, over a steel structure with expressive angles design.



# Traço.

It is characterized by its design of smooth curves, like a line drawn by hand on paper. It presents a physical and formal lightness brought by the use of the nautical rope combined with the aluminum structure.





# Taina

The line brings the reference of the 50s in the toothpick feet. Offers a practical and elegant way to harmonize the external spaces.

Taina is a modern classic design with movement of elegant wefts that fit in all outdoor spaces. Its loose cushions allow the practicality of the furniture.







# Aika

## Aika chaise

A relaxed way to relax. As it is a modular line, produced in aluminum and nautical rope, allows a wide variety combinations, providing versatility to their use.





## Contact.

Learn more about our lines and materials, request:

2D and 3D blocks

Handout with features, tips for use and maintenance  
of materials, still and set images

Virtual catalog

Full portfolio map

[brisacasa.com/brisa](https://brisacasa.com/brisa)

[comercial3@brisacasa.com](mailto:comercial3@brisacasa.com)

[comercial4@brisacasa.com](mailto:comercial4@brisacasa.com)

+55 43 3251 4330

+55 43 3035 8358